



INSTALLER / USER MANUAL

SALUS Controls plc
SALUS House
Dodworth Business Park South,
Whinby Road, Dodworth,
Barnsley S75 3SP, UK.

Sales: T: +44 (0) 1226 323961
E: sales@salus-tech.com

Technical: T: +44 (0) 1226 323961
E: tech@salus-tech.com

www.salus-controls.com



SALUS Controls is a member of the Computime Group. Maintaining a policy of continuous product development, SALUS Controls plc reserves the right to change specification, design and materials of products listed in this brochure without prior notice.



Product Compliance

This product complies with the essential requirements and other relevant provisions of Directives 2014/30/EU, 2014/53/EU and 2011/65/EU. The full text of the EU Declaration of Conformity is available at the following internet address: www.saluslegal.com.

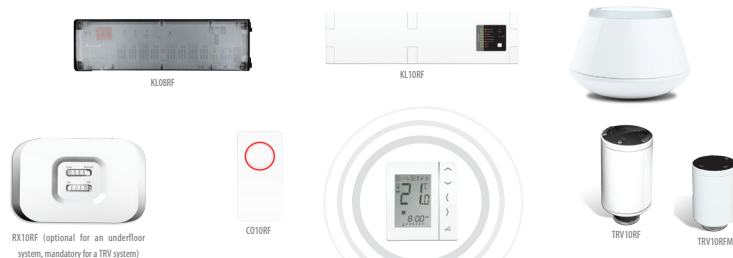
Safety Information

Use in accordance with the regulations.
Indoor use only.
Keep your device completely dry.
Disconnect your device before cleaning it with a dry cloth.

Always isolate the AC Mains supply before installing or working on any components that require 230 VAC 50Hz supply.

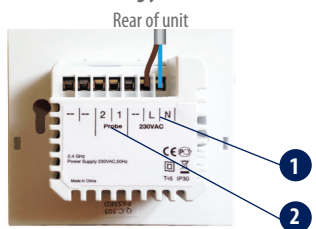
Introduction

Thank you for purchasing the SALUS 4 in 1 room thermostat it must be used with the Universal Gateway UGE600 (purchased separately) when having an Internet connection or with the KL08RF for the underfloor system without Internet connection. The Universal Gateway allows communication with other devices in the iT600 RF system range. Other Zigbee devices include wiring centre, system receiver & TRV. You can use your iT600 system with the Salus Smart HomeApp. Available on Google Play and App Store.



Installation – Terminal Connections VS10WRF

Understanding your terminal connections



- Power Terminals 230 Vac**
Used for supplying power to the unit. 230V supply can be sourced from the wiring centre or any convenient source.
- Sensor Terminals**
Can be used for external AIR, Floor sensor when configured as thermostat. Can also be used for Cylinder thermostat when configured for HW.

Installation – First Power Up

The following screens show examples only

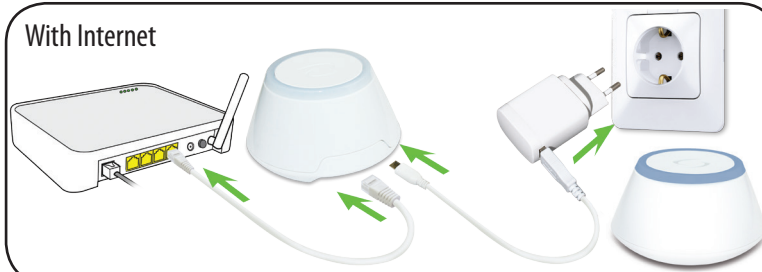


*Please note that 88.8 and 8.8 are a reference to the software version.

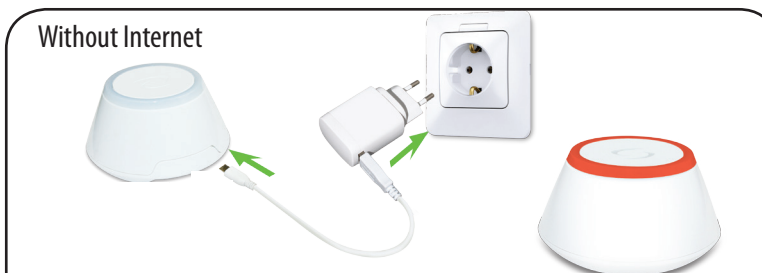
MCU software version will be shown
ZIGBEE software version will be shown

Please make sure that your Universal Gateway is installed. You can use it with both internet and non internet connection. The LED will be blue when connected to the internet and red when it's not connected.

With Internet



Without Internet



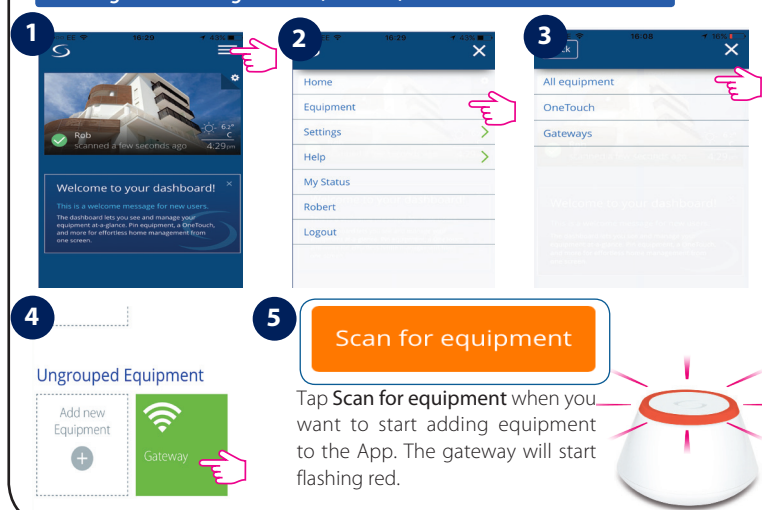
If you are installing an underfloor system without an Internet connection, you can use the coordinator from the KL08RF instead of the Universal Gateway.

Installation – Power Up your devices

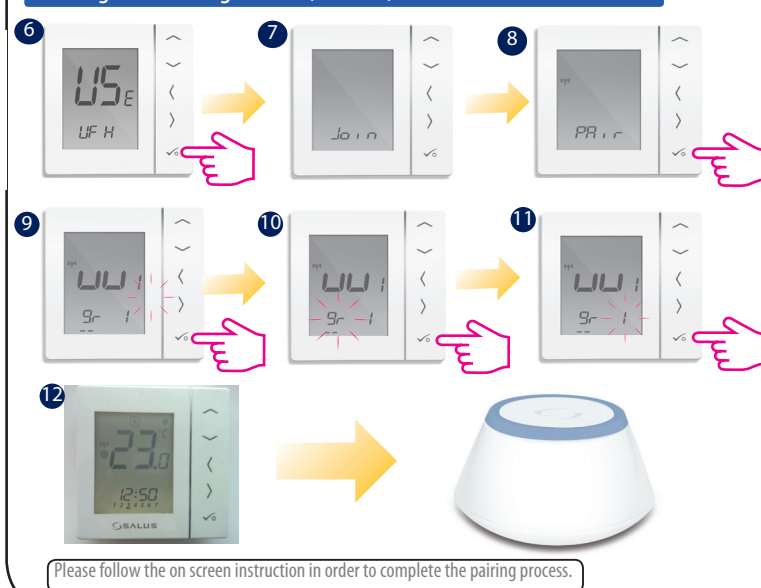
Please follow the installation procedure for all equipment. After installation, your devices should look like this:



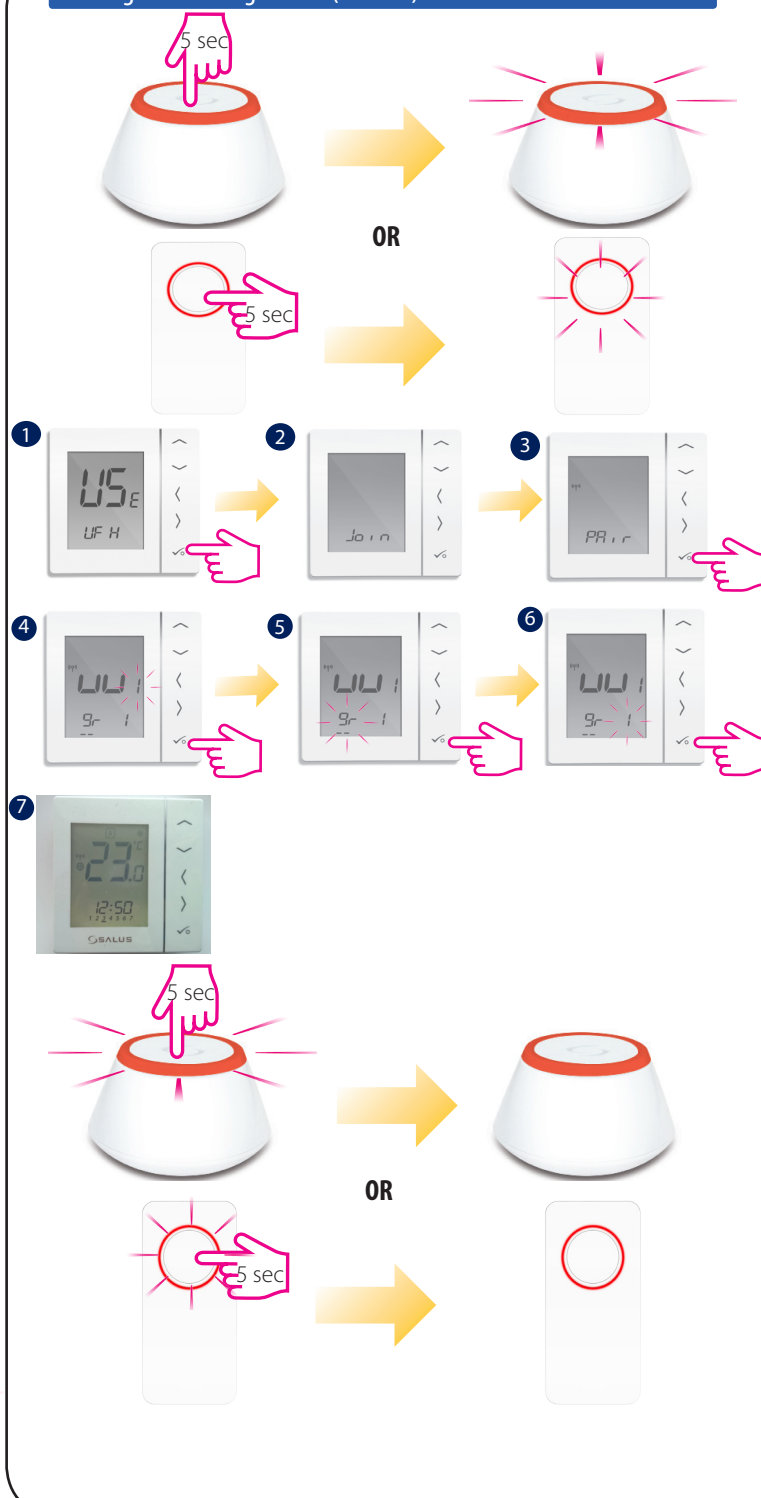
Pairing with Wiring Center (KL08RF) with Internet connection



Pairing with Wiring Center (KL08RF) with Internet connection



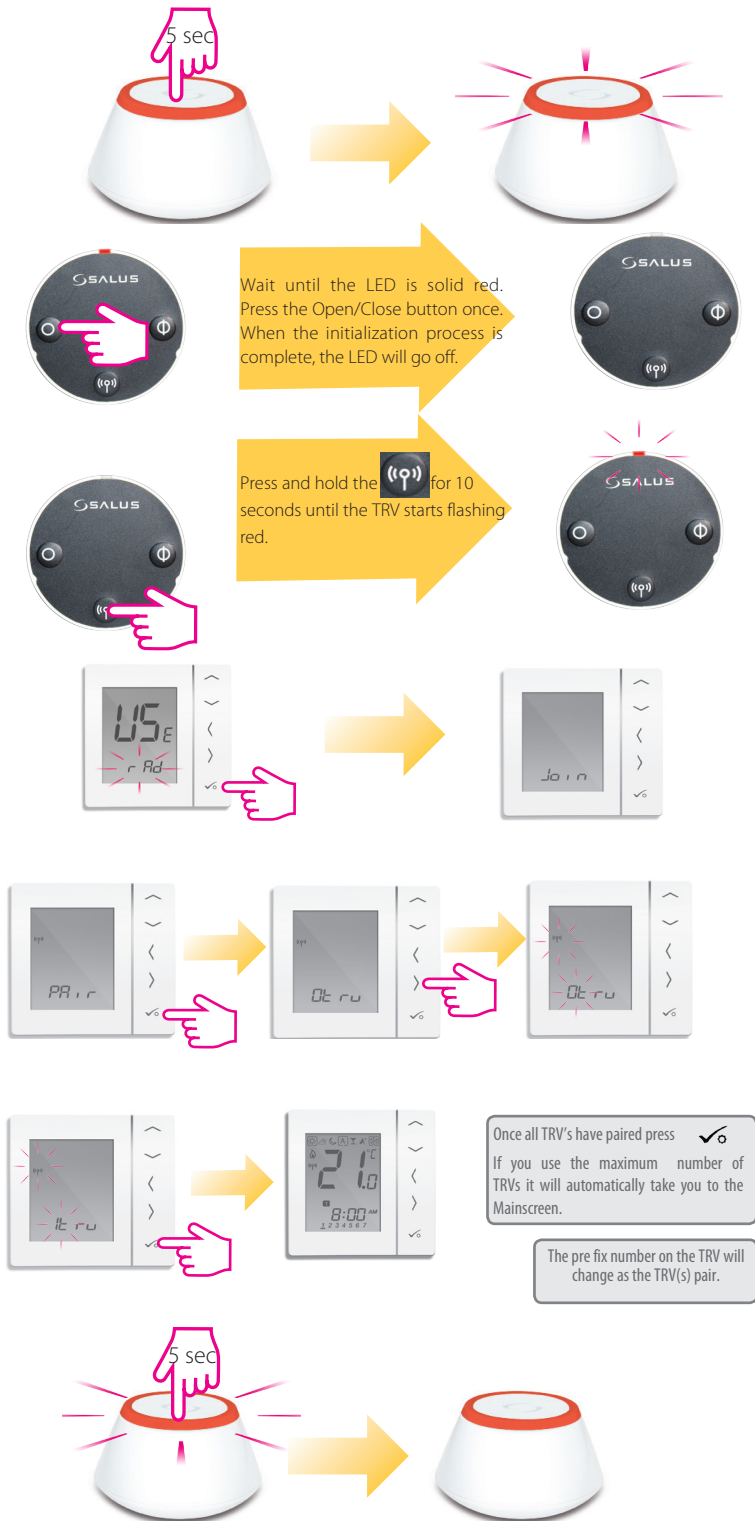
Pairing with Wiring Center (KL08RF) without Internet connection



Pairing the TRV with Internet connection

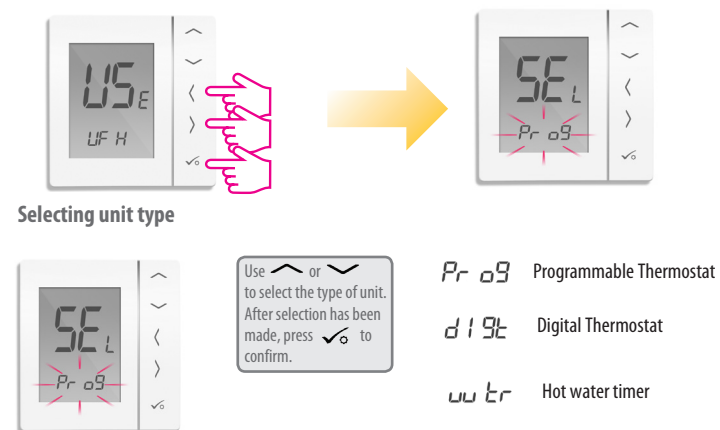


Pairing the TRV without Internet connection

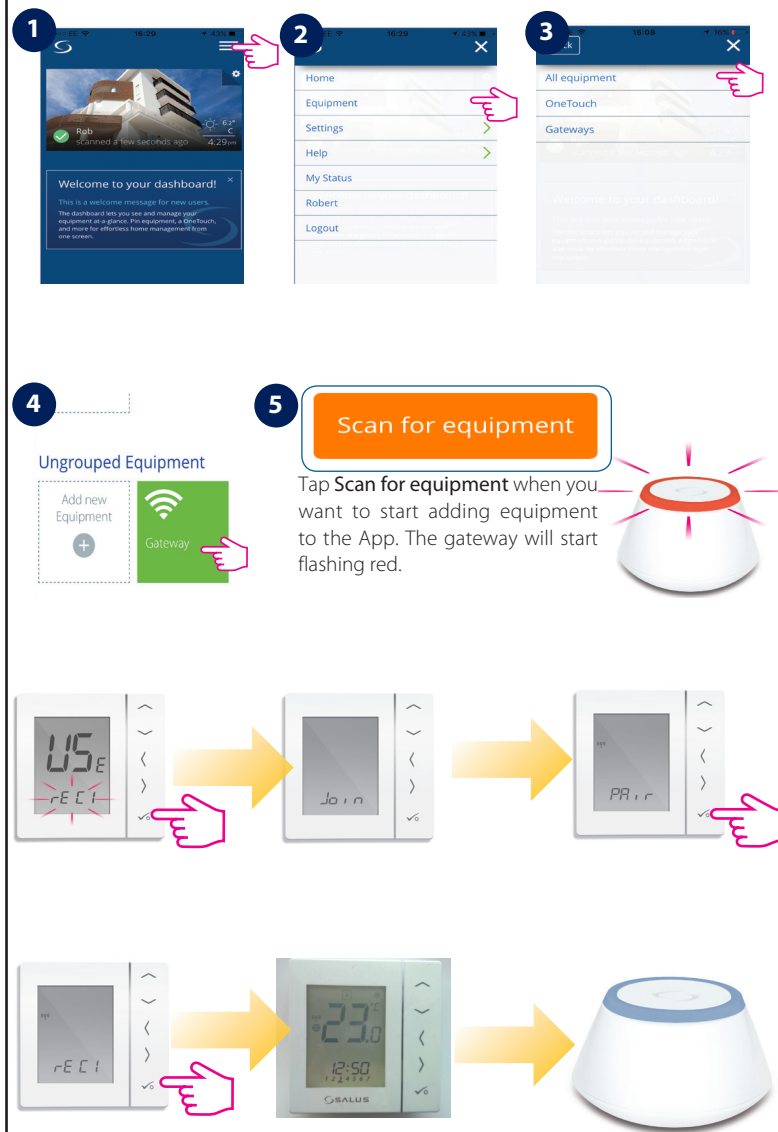


Installation – System Parameters

If the pre-configured program is not suitable for your application, hold down the bottom three keys for a short time, until the display shows SEL PROG.

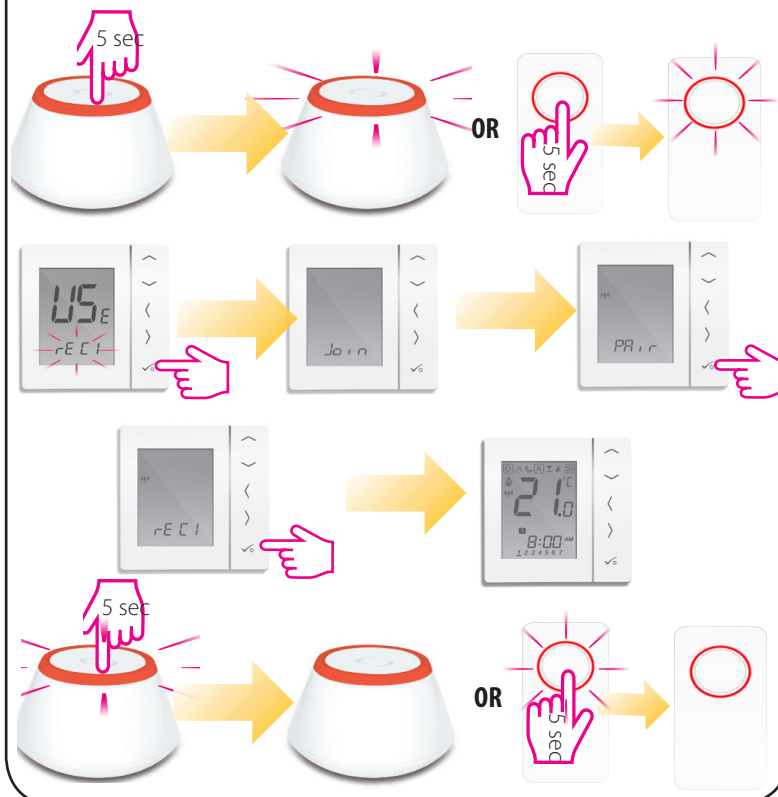


Pairing the Receiver RX10RF with Internet connection

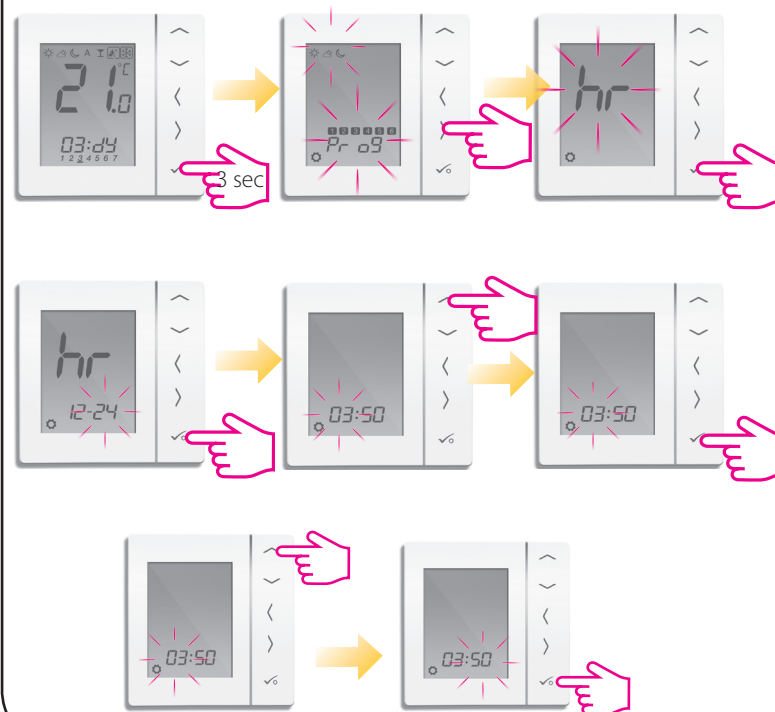


Pairing the Receiver RX10RF without Internet connection

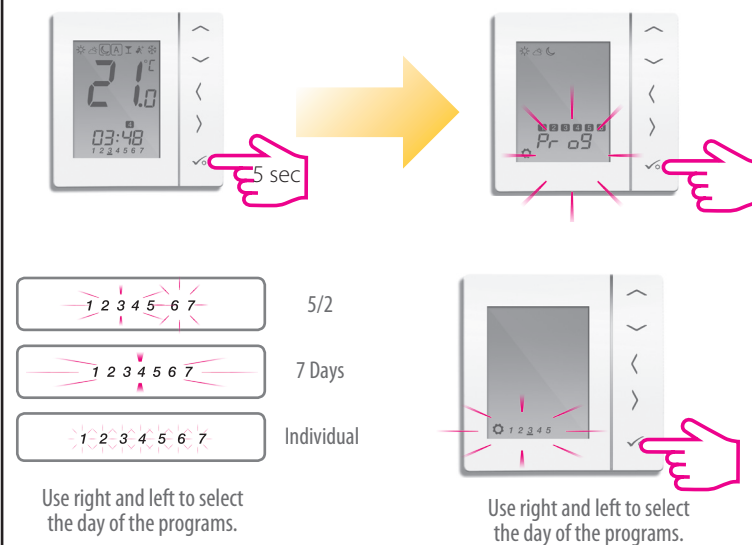
Follow the System Parameters instructions and set your Receiver on RX1.



Setting the time

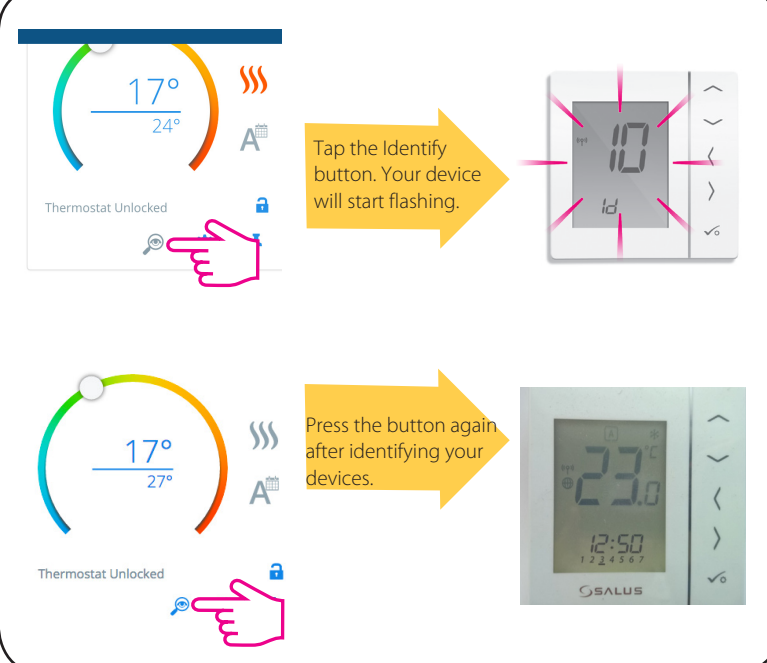
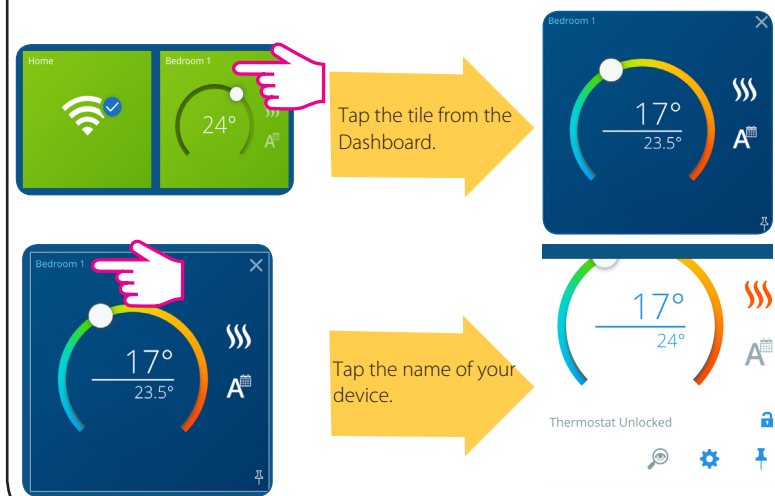


Set the program / schedule.



Installation – Check the paired devices

If you want to see what devices are connected to your Universal Gateway you can know exactly by using the Identify procedure.



Factory reset

If you have made an error or need to change your system parameters please follow steps below. This should only be done by your installer.

